

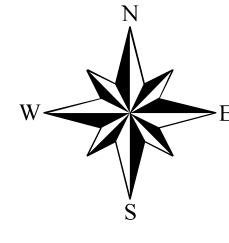
OFFICIAL ZONING MAP

TOWN OF SEVEN DEVILS, N.C.

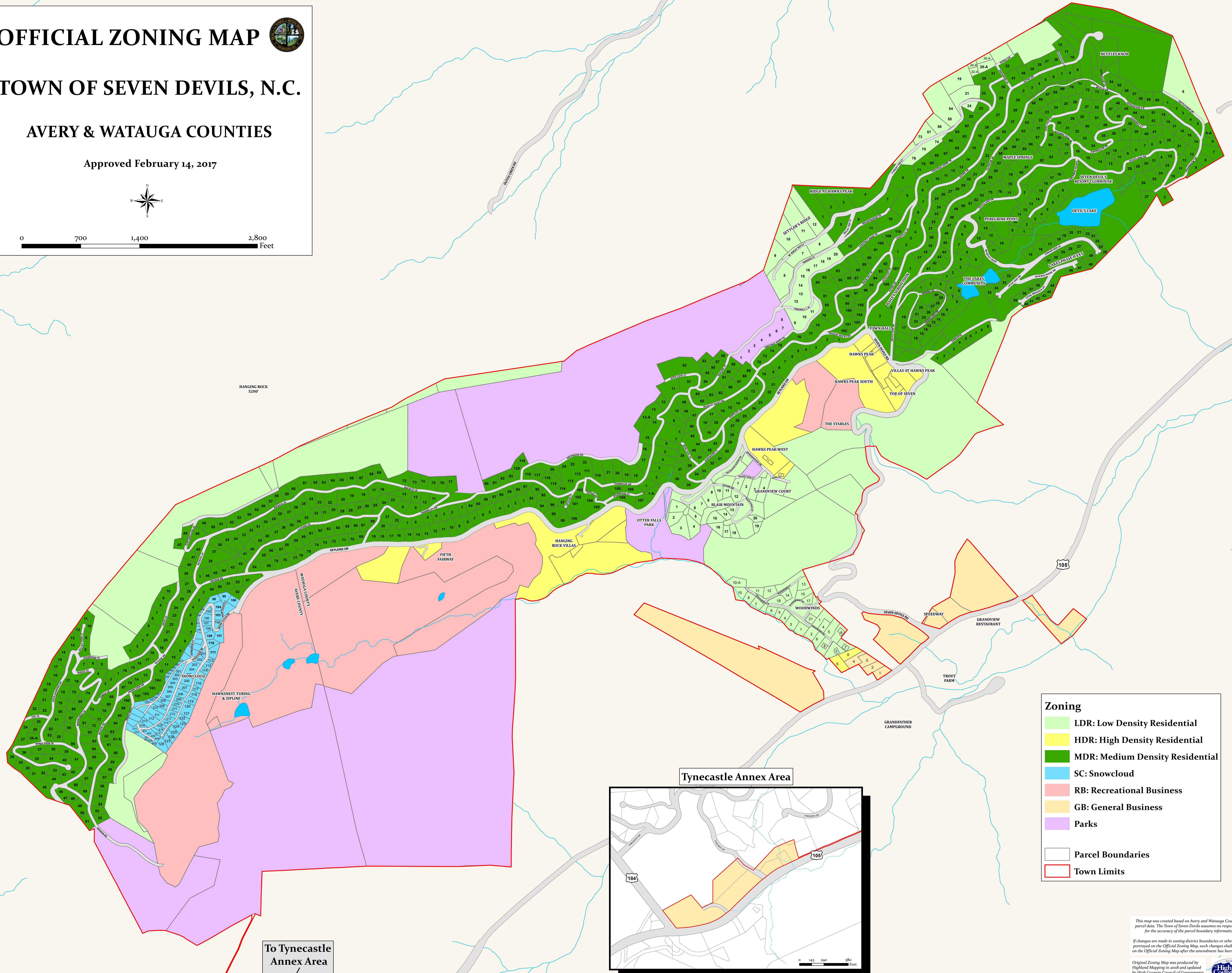
AVERY & WATAUGA COUNTIES



Approved February 14, 2017

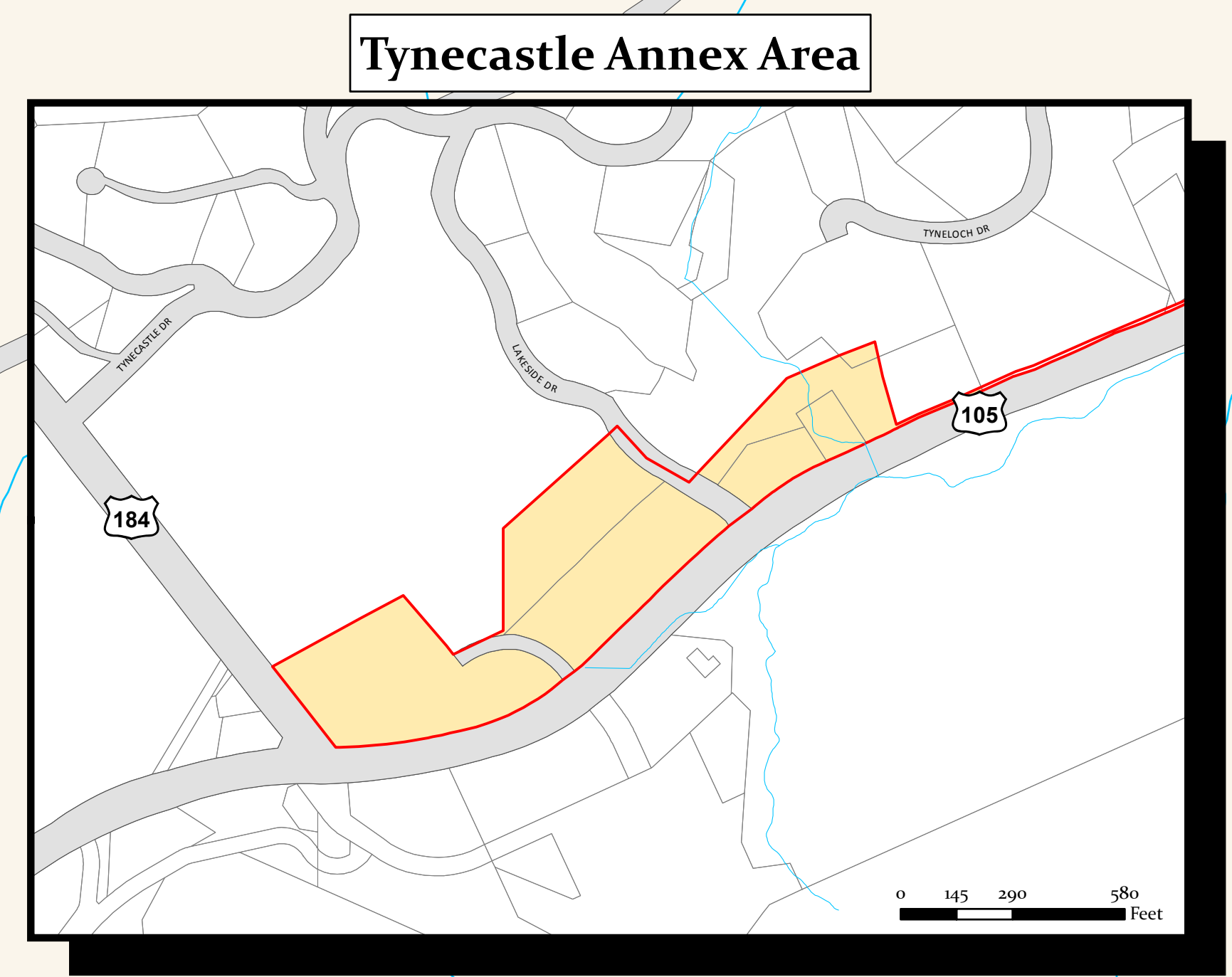


0 700 1,400 2,800 Feet



Zoning

- LDR: Low Density Residential
- HDR: High Density Residential
- MDR: Medium Density Residential
- SC: Snowcloud
- RB: Recreational Business
- GB: General Business
- Parks
- Parcel Boundaries
- Town Limits



To Tynecastle Annex Area

This map was created based on Avery and Watauga County tax parcel data. The Town of Seven Devils assumes no responsibility for the accuracy of the parcel boundary information.

If changes are made in zoning district boundaries or other matters portrayed on the Official Zoning Map, such changes shall be made on the Official Zoning Map after the amendment has been adopted.

Original Zoning Map was produced by Highland Mapping in 2008 and updated by High Country Council of Governments in February 2017.